

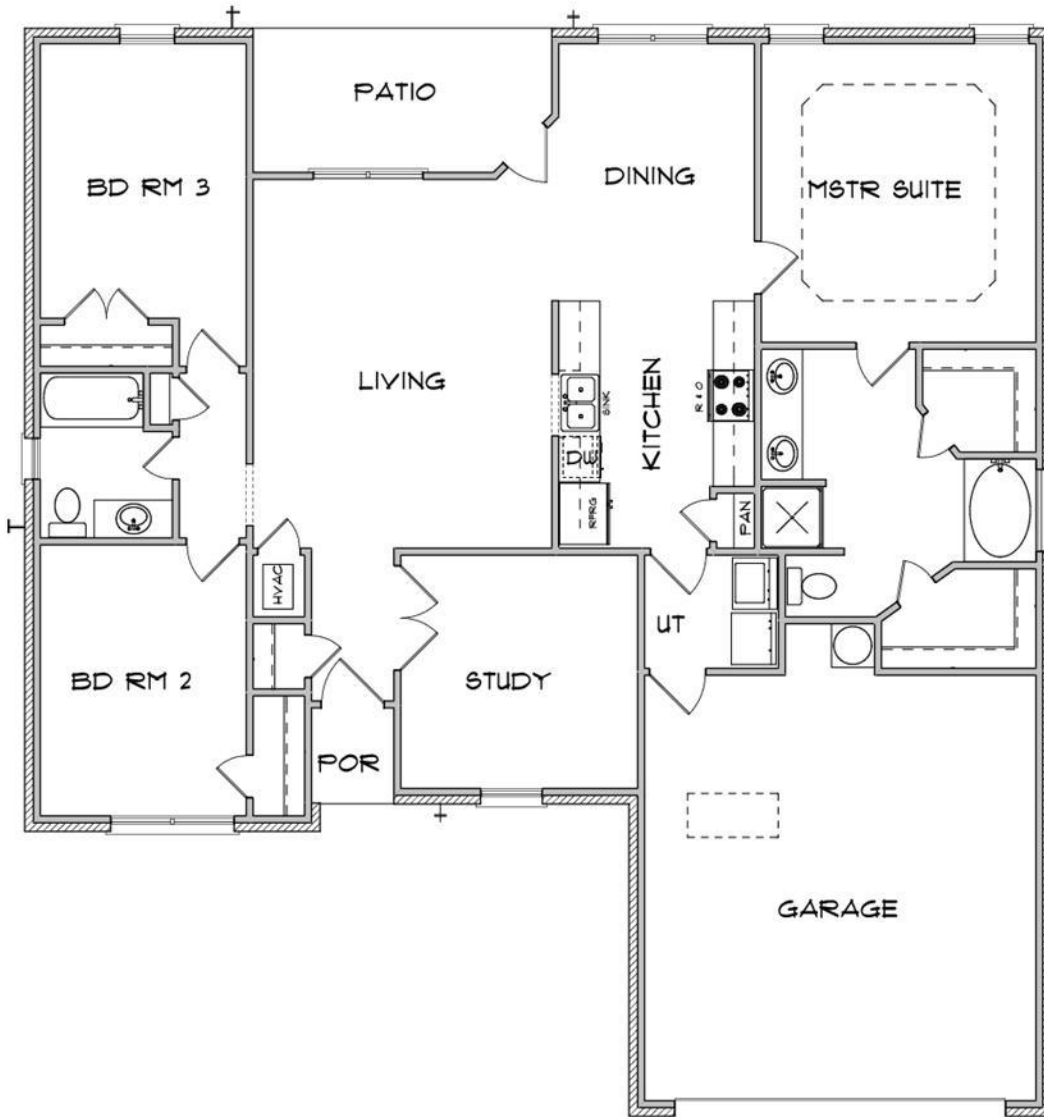
The Texas

Approximately 1648 Square Feet per Builder Plans



info@jerrywrighthomes.com
254-681-4875

*Building Quality and
Value in
Central Texas Homes
for over 15 Years!*



www.JerryWrightHomes.com

Marketed by
Mary Ann Daniell, Realtor
Coldwell Banker United, Realtors
*Each office independently
owned and operated*



*Actual homes under construction may vary from floorplan pictured.
Prices and amenities are subject to change at any time prior to construction or during
the construction process.*